



## VG2 Series

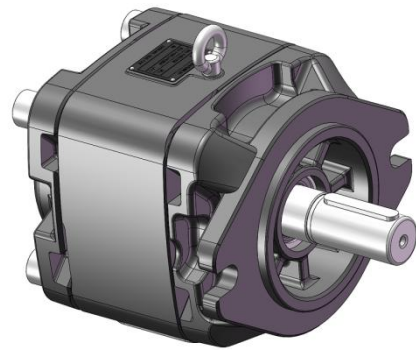
Internal gear pump consists of pump body, internal gear ring, gear shaft, front cover, back cover, flow distribution disk, crescent plate, sealing rod and other parts. The front and rear covers and pump body are made of high-strength cast iron structure, with axial and radial pressure compensation design. It has the features of high working pressure, wide range of speed, low noise, reliable work, etc. It is mainly used in the hydraulic system of injection molding machine, die-casting machine and other machinery.

### Model Description

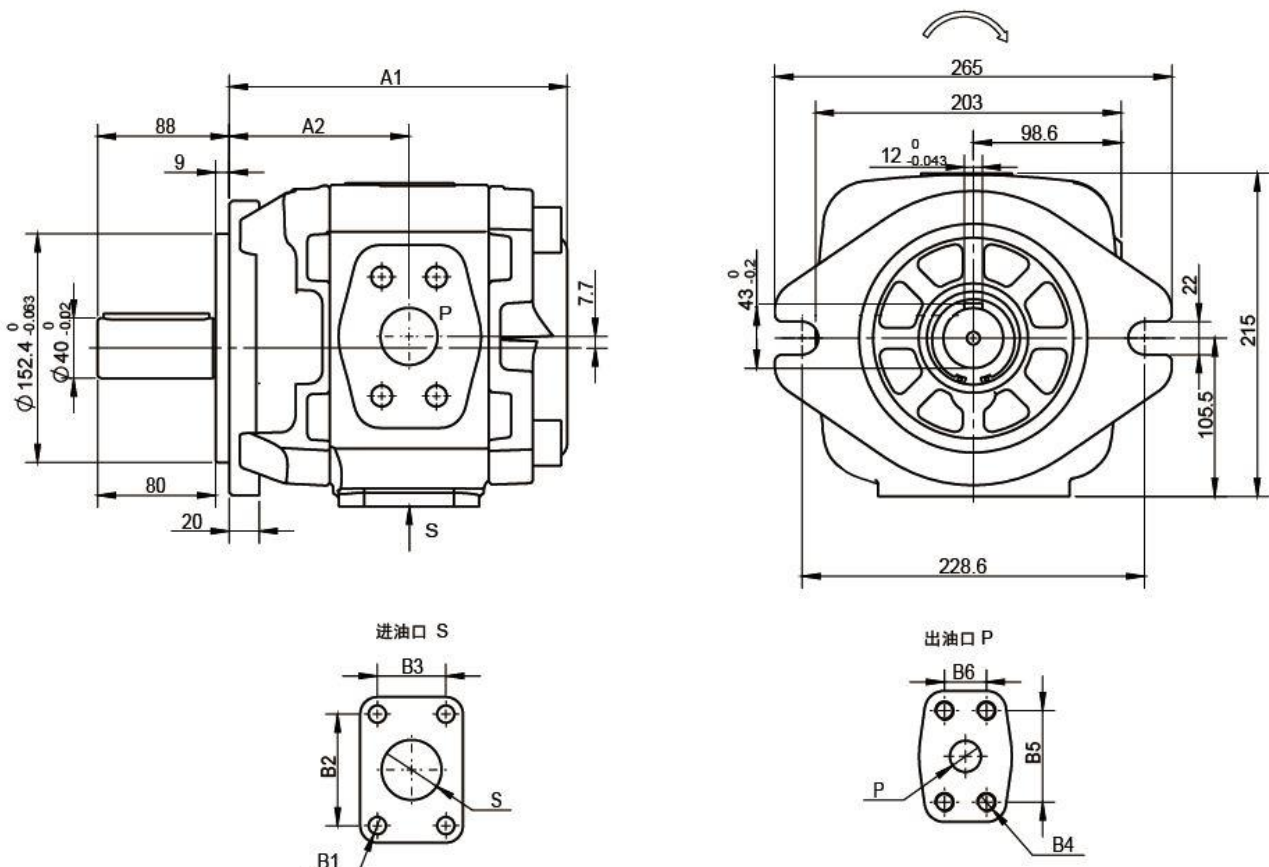
#### VG2 - G \*\* - R P F

① ② ③ ④ ⑤ ⑥

- ① Product code
- ② Pressure rating G: 31.5MPa
- ③ Nominal displacement
- ④ Direction of rotation R: CW L: CCW
- ⑤ Axis extension form P: Flat key S: Spline
- ⑥ Oil port form F: Flange form



### External figure





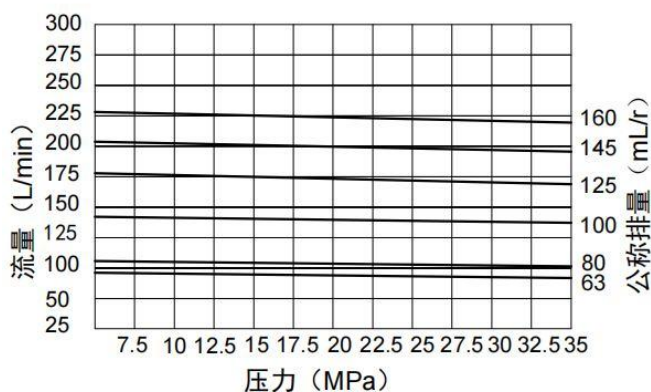
## Performance Parameters

型号	公称排量 (mL/r)	压力 (MPa)		转速 (r/min)		容积效率 (≥%)	A2	A1	S	B1	B2	B3	P	B4	B5	B6
		额定	最高	最低	最高											
VG2-G063	63	31.5	35	200	3000	92	105.5	196	φ40	M12深20	69.9	35.7	φ23	M10深17	52.4	26.2
VG2-G080	80	31.5	35	200	3000	92	109	204	φ51		77.8	42.9	φ32	M12深20	69.9	35.7
VG2-G100	100	31.5	35	200	3000	92	114	216	φ63.5		88.9	50.8	φ38	M16深25	79.4	36.5
VG2-G125	125	31.5	35	200	3000	92	120	225		106.4	61.9					
VG2-G145	145	31.5	35	200	3000	92	124.5	235.5	φ76	M16深25	106.4	61.9	φ38	M16深25	79.4	36.5
VG2-G160	160	31.5	35	200	3000	92	129	243								

### Characteristic curve

Flow pressure characteristics:

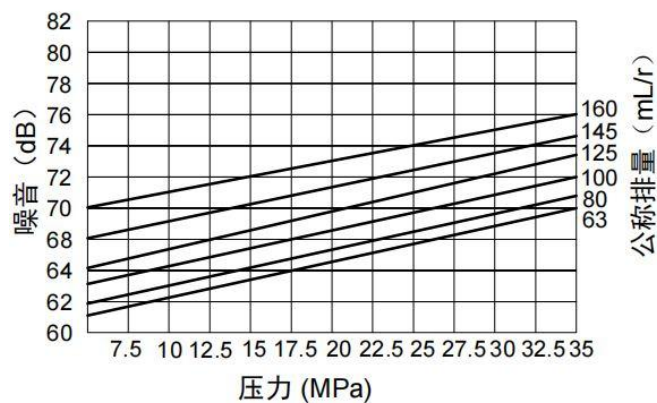
Test conditions: n=1450r/min V=46mm<sup>2</sup>/S t=55°C



### Noise curve

Pressure noise characteristics:

Test conditions: n=1450r/min V=46mm<sup>2</sup>/S t=55°C



## Product Applications



Injection molding machine