



## VG1 Series-----

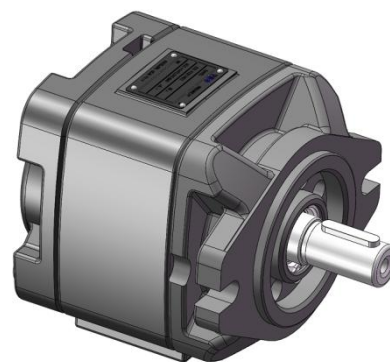
Internal gear pump consists of pump body, internal gear ring, gear shaft, front cover, back cover, flow distribution disk, crescent plate, sealing rod and other parts. The front and rear covers and pump body are made of high-strength cast iron structure, with axial and radial pressure compensation design. It has the features of high working pressure, wide range of speed, low noise, reliable work, etc. It is mainly used in hydraulic systems of hydraulic presses, blow molding machines and other machinery.

### Model Description

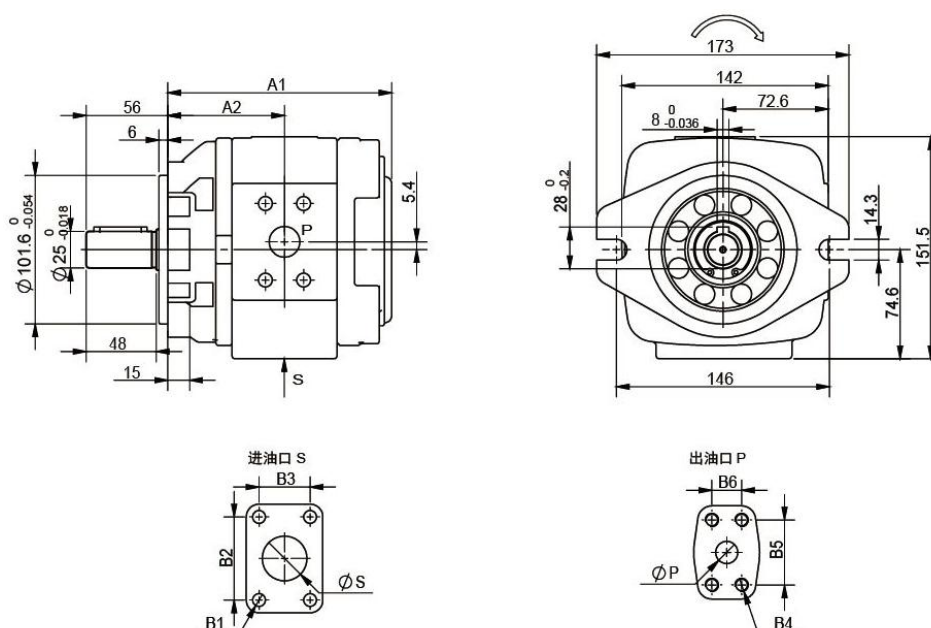
**VG1 - G \*\* - R P F**

① ② ③ ④ ⑤ ⑥

- ① Product code
- ② Pressure rating G: 31.5MPa
- ③ Nominal displacement
- ④ Direction of rotation R: CW L: CCW
- ⑤ Axis extension form P: Flat key S: Spline
- ⑥ Oil port form F: Flange form



### External figure





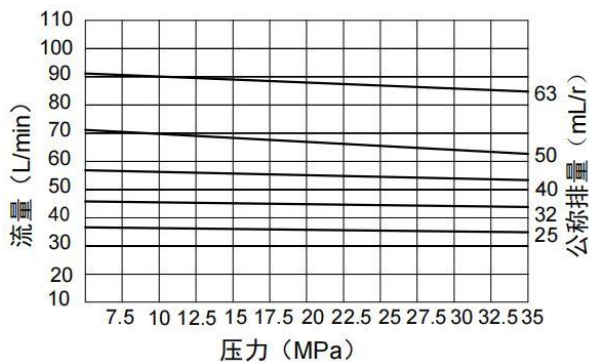
## Performance Parameters

型号	公称排量 (mL/r)	压力 (MPa)		转速 (r/min)		容积效率 ( $\geq\%$ )	A2	A1	S	B1	B2	B3	P	B4	B5	B6
		额定	最高	最低	最高											
VG1-G25	25	31.5	35	200	3000	92	73	139	Φ32	M10深17	58.7	30.2	Φ18	M10深17	47.6	22.2
VG1-G32	32	31.5	35	200	3000	92	76	146							Φ20	M10深17
VG1-G40	40	31.5	35	200	3000	92	80	153								
VG1-G50	50	31.5	35	200	3000	92	85	163								
VG1-G63	63	31.5	35	200	3000	92	92	177								

### Characteristic curve

Flow pressure characteristics:

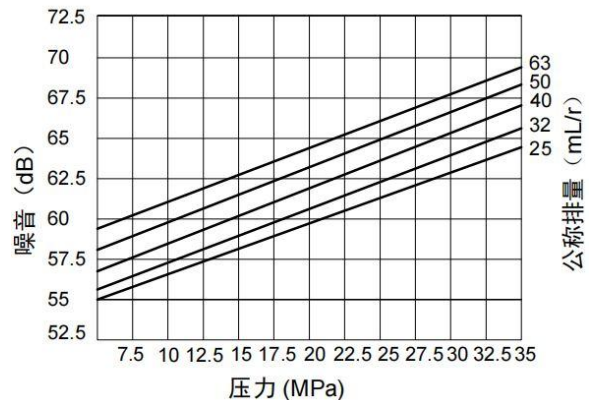
Test conditions:  $n=1450\text{r/min}$   $V=46\text{mm}^2/\text{S}$   $t=55^\circ\text{C}$



### Noise curve

Pressure noise characteristics:

Test conditions:  $n=1450\text{r/min}$   $V=46\text{mm}^2/\text{S}$   $t=55^\circ\text{C}$



## Product Applications



Oil hydraulic press



Blow molding machines