



VGO Series

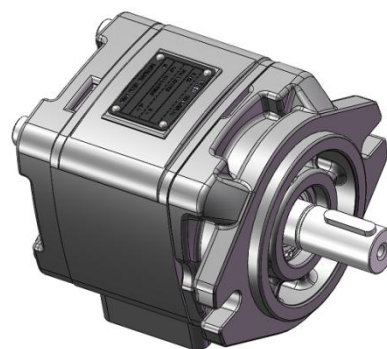
Internal gear pump consists of pump body, internal gear ring, gear shaft, front cover, back cover, flow distribution disc, crescent plate, sealing rod and other components. The front and rear covers and pump body are made of high-strength cast iron structure, with axial and radial pressure compensation design. It has the features of high working pressure, wide range of speed, low noise, reliable work, etc. It is mainly used in the hydraulic system of bending machine, die-casting machine and other machinery.

Model Description

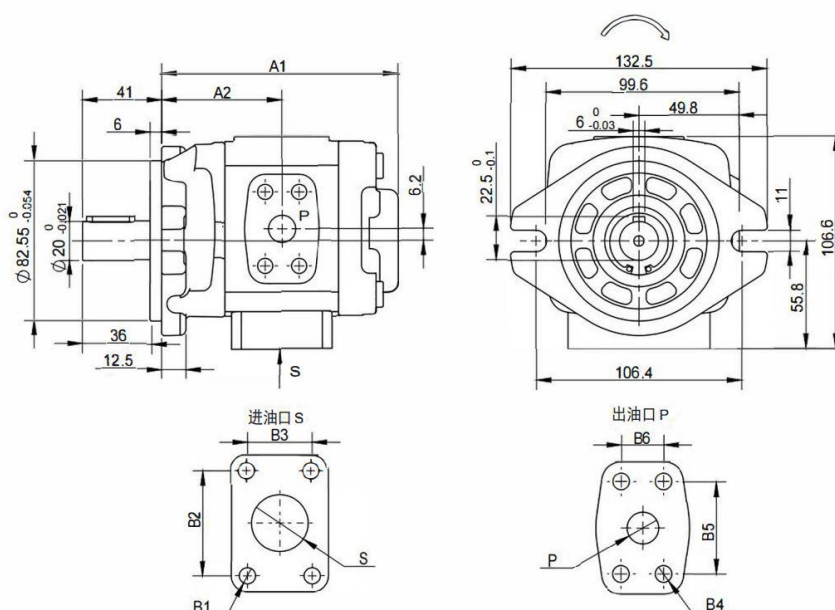
VGO - G ** - R P F

① ② ③ ④ ⑤ ⑥

- ① Product code
- ② Pressure rating G:31.5MPa
- ③ Nominal displacement
- ④ Direction of rotation R: CW L: CCW
- ⑤ Axis extension form P: Flat key S: Spline B: Oblate key
- ⑥ Oil port form F: Flange form L: Thread



External figure





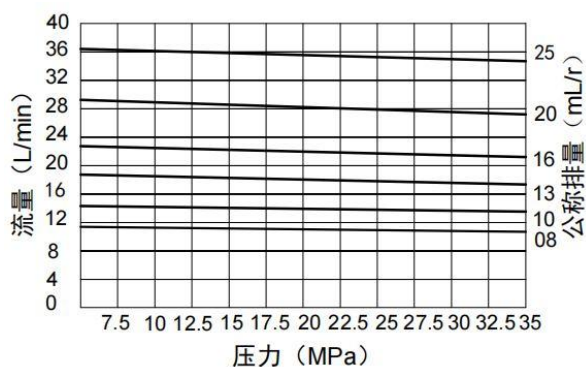
Performance Parameters

型号	公称排量 (mL/r)	压力(MPa)		转速(r/min)		容积效率 (%)	A2	A1	S	B1	B2	B3	P	B4	B5	B6
		额定	最高	最低	最高											
VG0-G08	8	31.5	35	200	3000	92	54	106	Φ19	M10深15	47.6	22.6	Φ13	M8深13	38.1	17.5
VG0-G10	10	31.5	35	200	3000	92	56	110								
VG0-G13	13	31.5	35	200	3000	92	59.5	116								
VG0-G16	16	31.5	35	200	3000	92	62	122	Φ26		58.7	30.2	Φ18	M10深15	47.6	22.2
VG0-G20	20	25	30	200	3000	92	65.5	130								
VG0-G25	25	25	30	200	3000	92	71.5	140	Φ28							

Characteristic curve

Flow pressure characteristics:

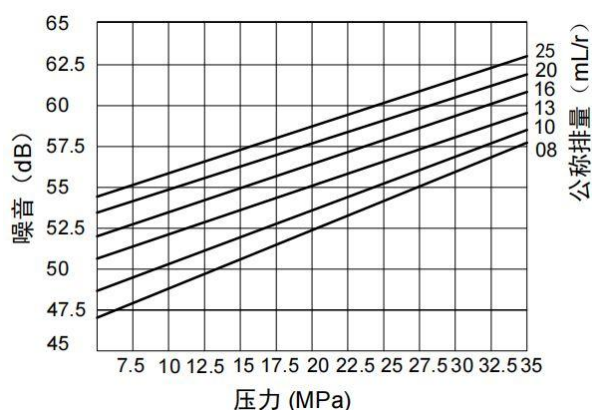
Test conditions: n=1450r/min V=46mm²/S t=55°C



Noise curve

Pressure noise characteristics:

Test conditions: n=1450r/min V=46mm²/S t=55°C



Product Applications



Bending machine



Die-casting machine