

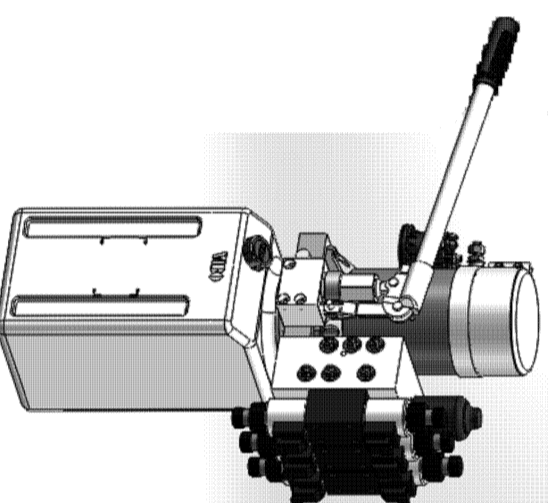


## VDPJU-MD24300-95-P

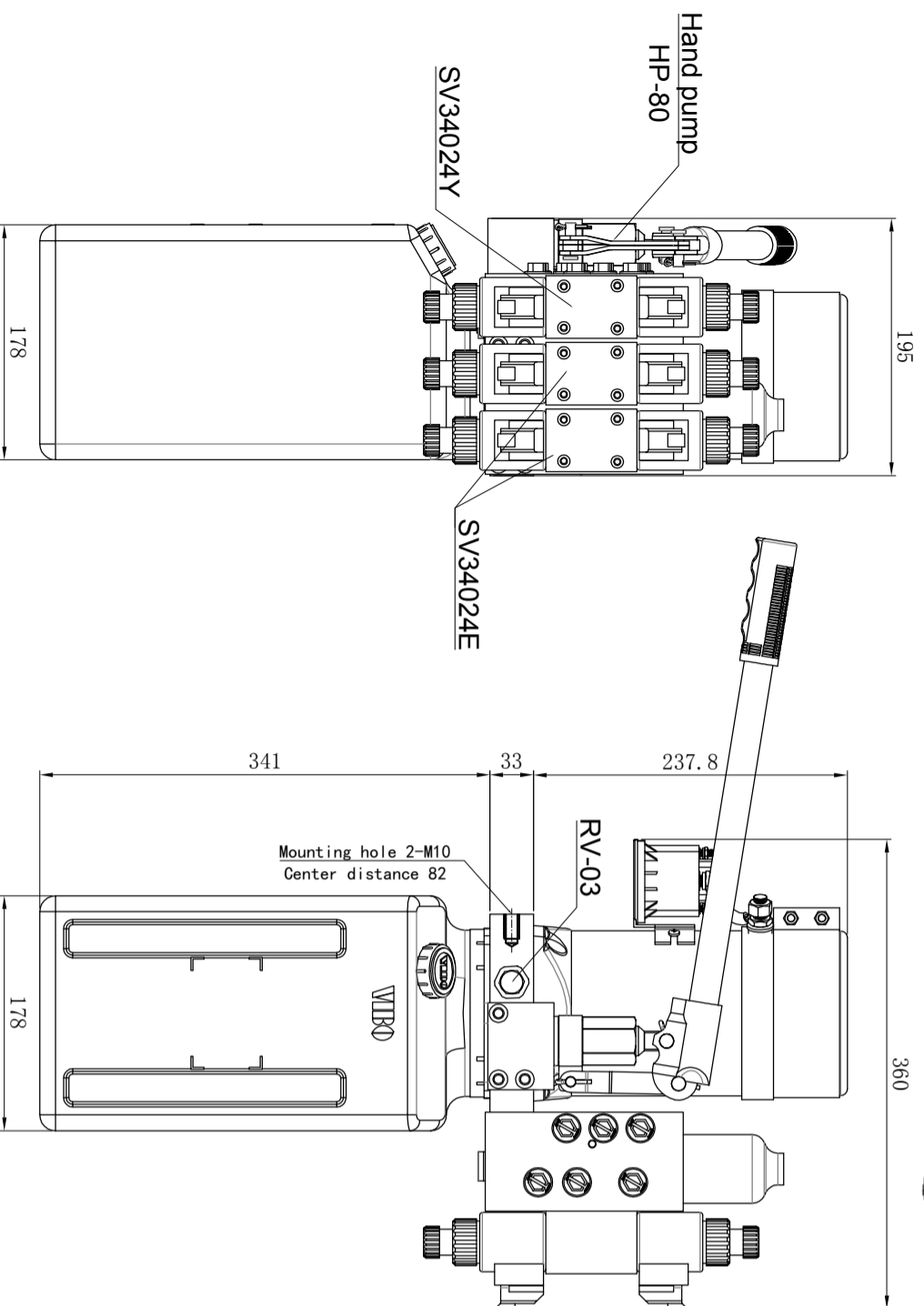
This hydraulic power unit is mainly used in the mast aerial platform, the unit integrates the independently developed integrated hydraulic manifold, cetop directional hydraulic valve group, 24V 3kW reexcited DC motor, CBKL helical gear pump, hand pump, three-position four-way cetop directional valve, oil filter and large capacity blowing tank, which controlled by the cetop directional valve, to realize the rise and fall of the aerial platform, the console extension & retraction and angle adjustment. In the case of emergency power failure can be manually lifted, the product design is novel, good stability and save space

### Technical Attributes

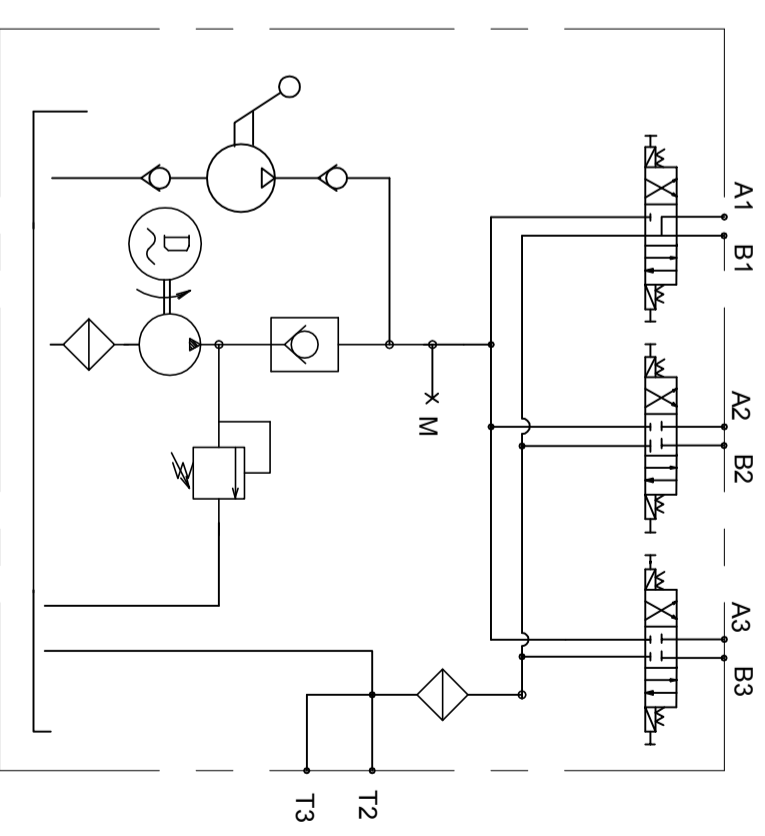
Model Code	VDPJU-MD24300-95-P
Motor Voltage	24V
Motor Power	3.0kW
Rated Speed	2600rpm
Pump Capacity	2.5mL/r
System Pressure	13MPa
Tank Capacity	8L
Oil Port	G1/4"



### Outline Dimensions



### Hydraulic Schematic Diagram



### Characteristic curve

