

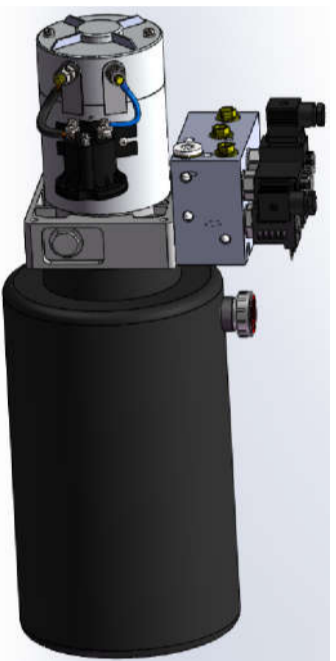


VDPJU-MD242201-38-T

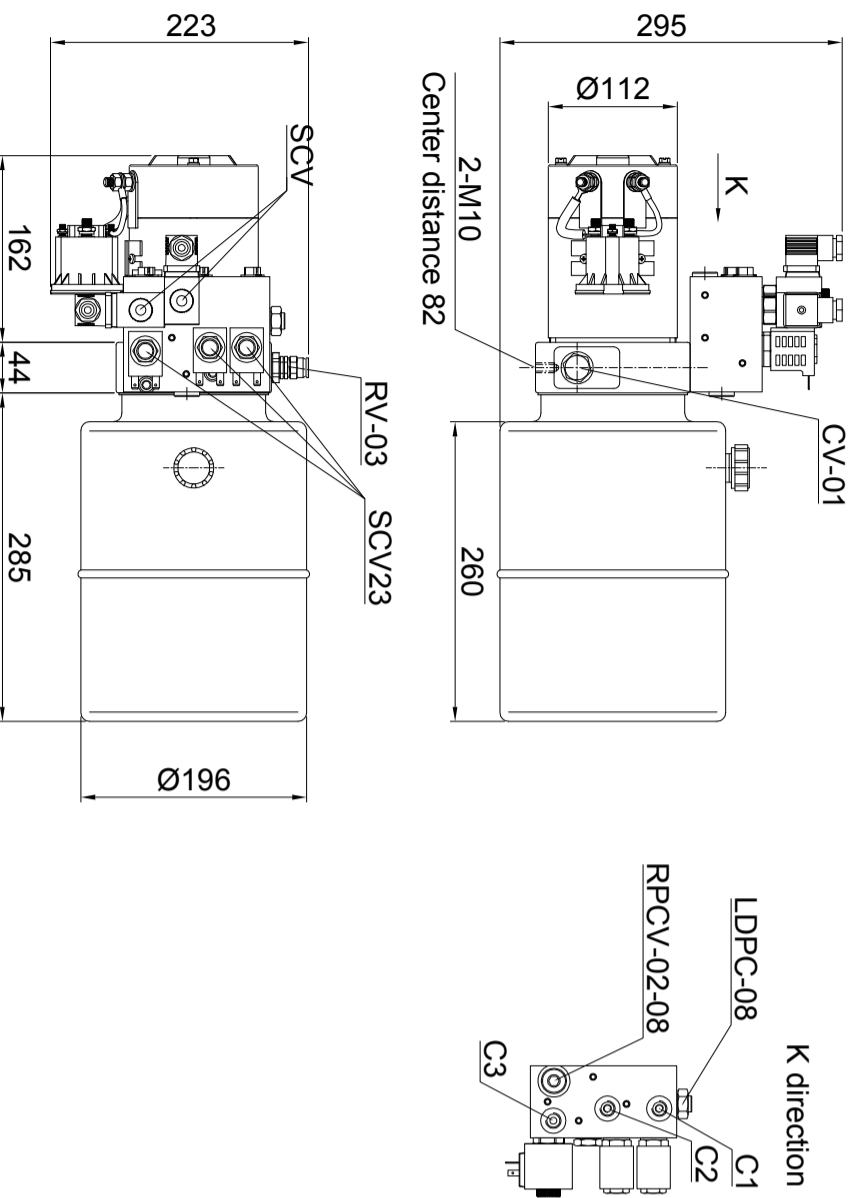
This power unit is mainly used for counter balance heavy electric stacker, integrating self-developed 24v 2.2kw high performance DC motor, silent helical gear pump, integrated hydraulic function block, check valve, relief valve, two position three way directional valve, solenoid valve, pressure compensation throttle valve, metal oil tank and other components. Through a variety of cartridge valves on the function block, can realize the lifting and lowering of the stacker, forward and backward, also double speed lowering.

Technical Attributes

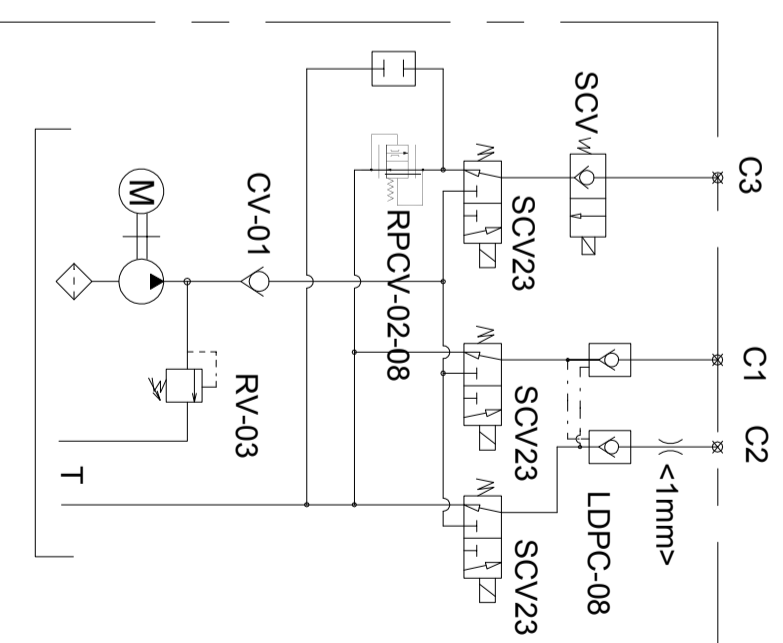
Model Code	VDPJU-MD242201-38-T
Motor Voltage	24V
Motor Power	2.2KW
Rated Speed	2300rpm
Pump Capacity	2.5ml/r
System Pressure	18MPa
Tank Capacity	7L
Oil Port	G1/4"



Outline Dimensions



Hydraulic Schematic Diagram



Characteristic curve

