

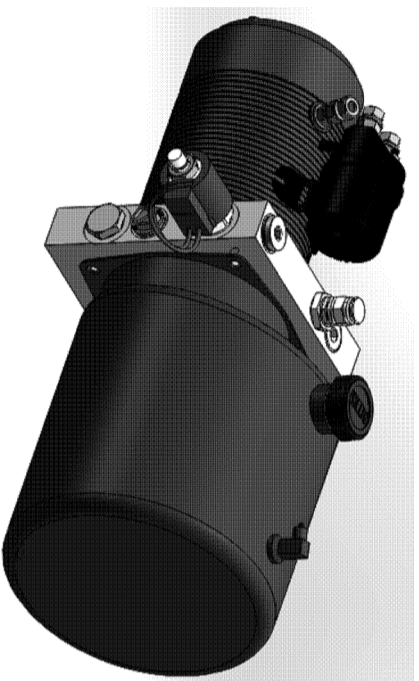


## VDP-U-MD24220-21B-T

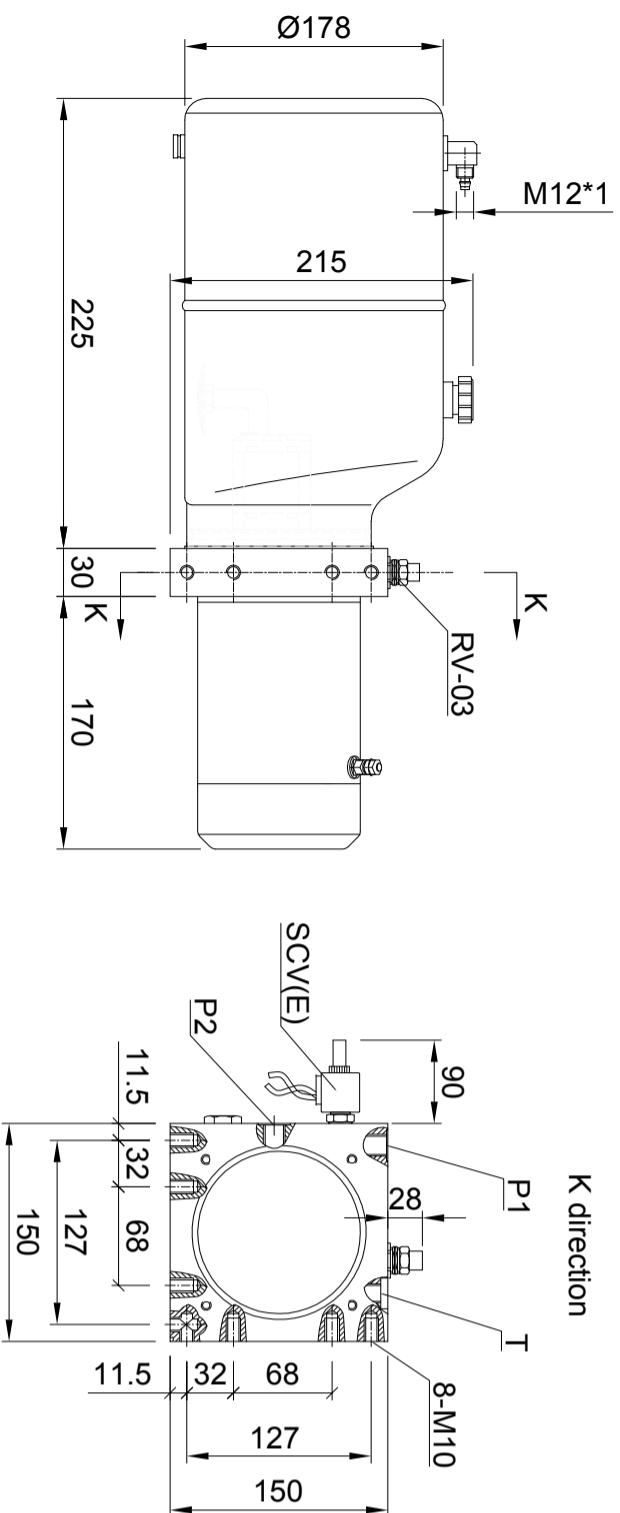
This product mainly provides lifting function for mobile aerial picker, equipped with self-developed 24V 2.2kW high-performance DC motor, CBKL helical gear pump, quantitative pressure compensation throttle valve, solenoid valve with manual descent function, the overall structure of the unit is reasonable, compact layout, safe and durable rise and fall smoothly in the case of power failure, the operator can control the manual descent valve, from a high altitude down to the ground.

### Technical Attributes

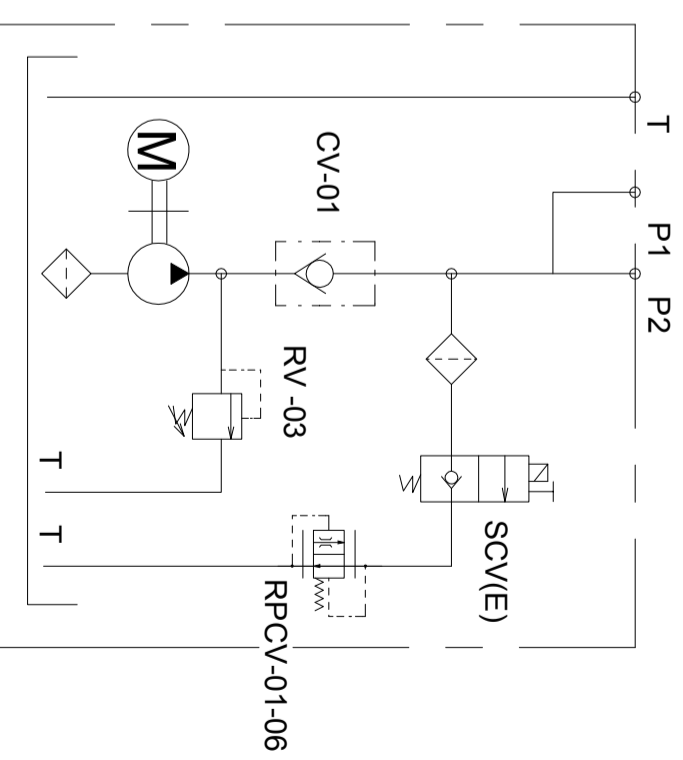
Model Code	VDP-U-MD24220-21B-T
Motor Voltage	24V
Motor Power	2.2KW
Rated Speed	2800rpm
Pump Capacity	2.0mL/r
System Pressure	16MPa
Tank Capacity	4L
Oil Port	G3/8"



### Outline Dimensions



### Hydraulic Schematic Diagram



### Characteristic curve

