

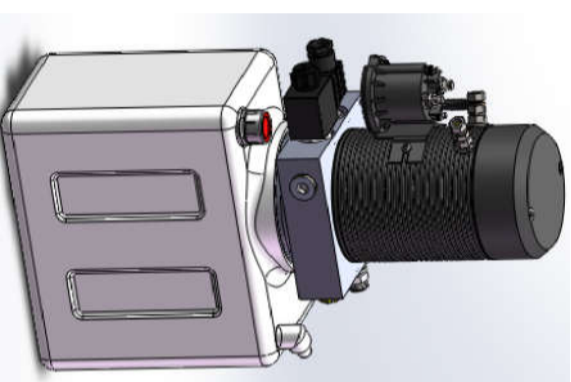


## VDPJU-MD24220-21A-P

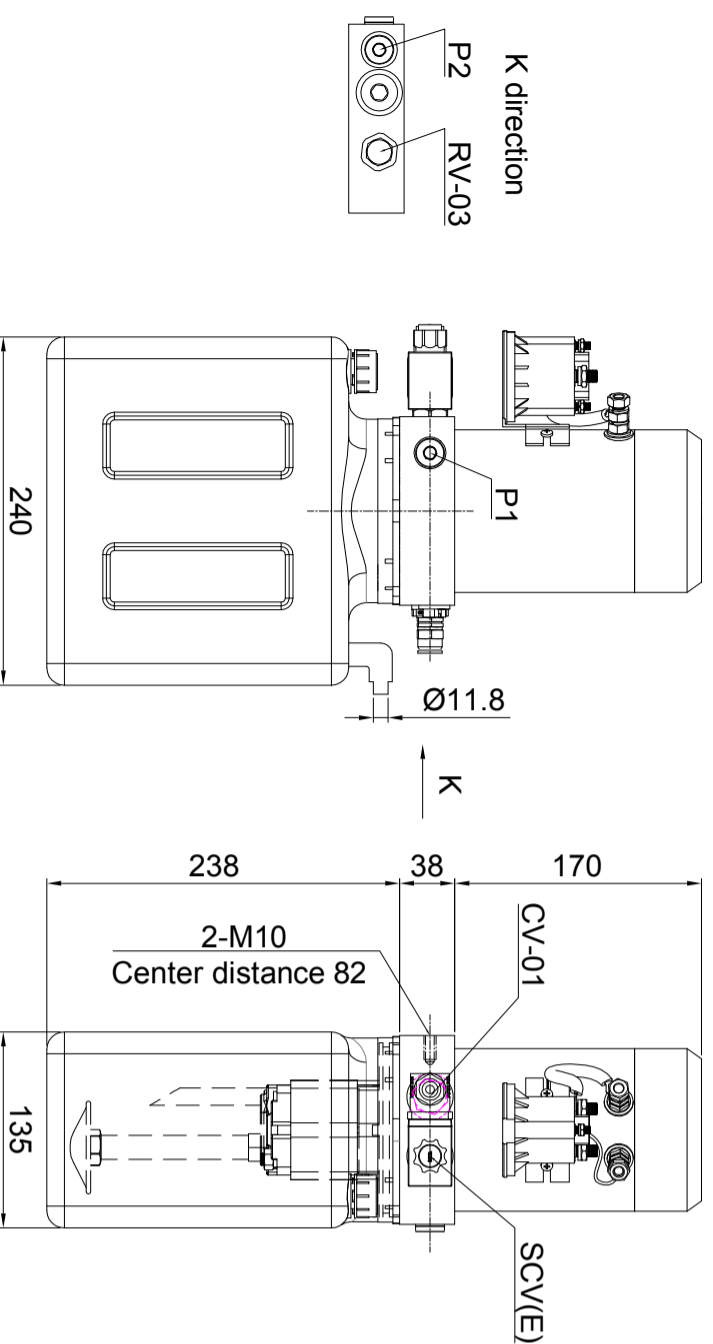
This power unit is mainly used in the full-electric stacker truck, and the lifting and lowering function of the stacker truck is realized by the unit. The unit integrates DC motor, helical gear pump and hydraulic oil tank in one, including solenoid valve for emergencydescent and quantitative type pressure compensation valve to realize the smooth descent of stacker truck, with low noise of hydraulic system and easy installation and operation.

### Technical Attributes

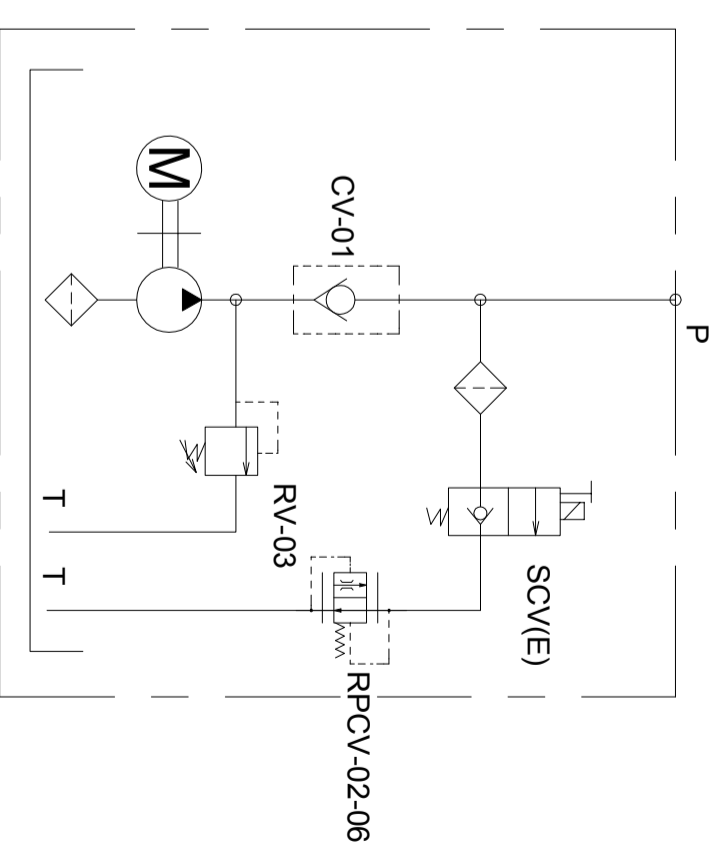
Model Code	VDPJU-MD242201-21A-P
Motor Voltage	24V
Motor Power	2.2KW
Rated Speed	2800rpm
Pump Capacity	2.0ml/r
System Pressure	20MPa
Tank Capacity	5L
Oil Port	G3/8 "



### Outline Dimensions



### Hydraulic Schematic Diagram



### Characteristic curve

