

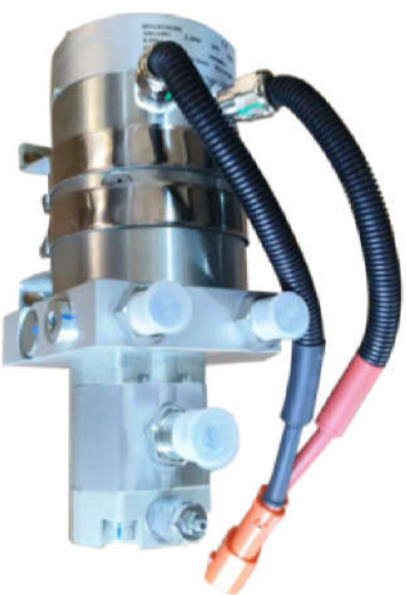


# VDP-U-MD24220-01

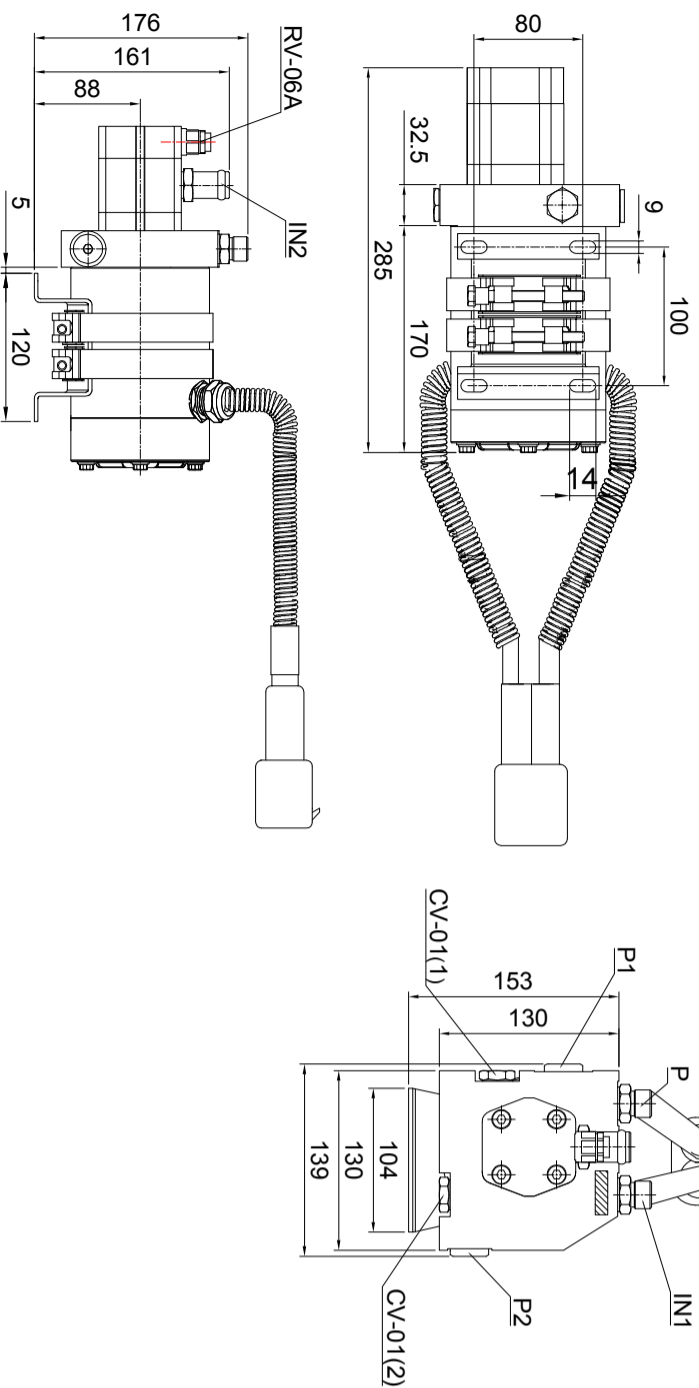
This product mainly provides emergency steering function for buses, equipped with self-developed high performance 24 v 2.2 kW waterproof DC motor, CBKL helical gear pump, the whole product structure is simple, safe, reliable and durable, waterproof and dust proof, protective performance reaches IP 67.

## Technical Attributes

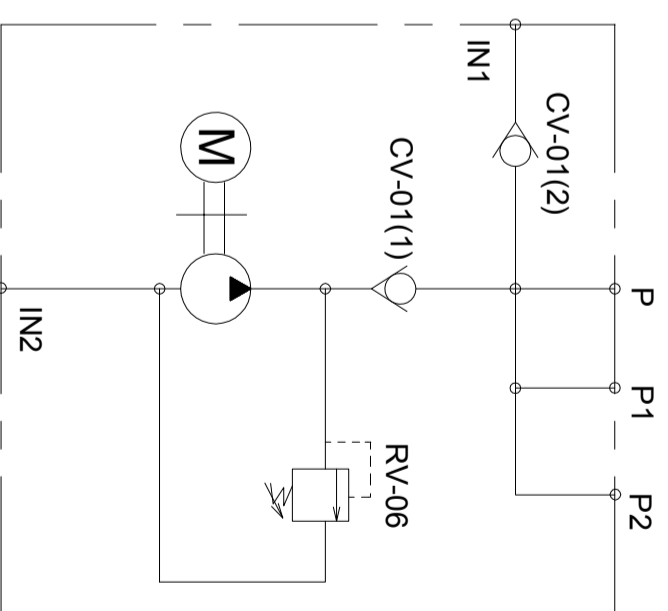
Model Code	VDP-U-MD24220-01
Motor Voltage	24V
Motor Power	2.2kW
Rated Speed	2900rpm
Pump Capacity	3.3mL/r
System Pressure	10MPa
Oil Port	M18*1.5



## Outline Dimensions



## Hydraulic Schematic Diagram



## Characteristic curve

