

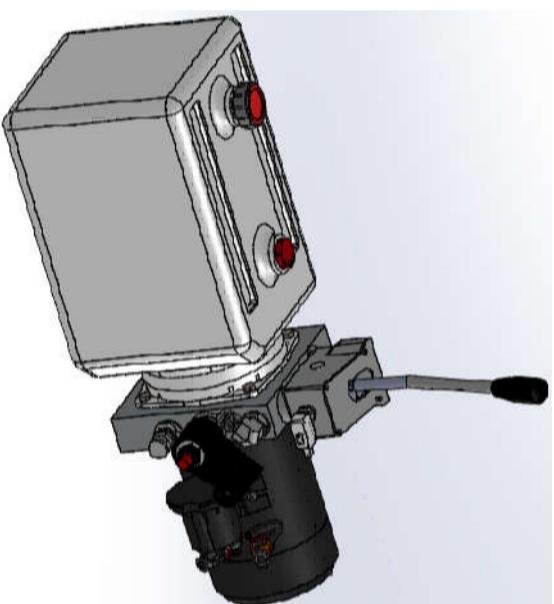


## VDP-U-MD12160-34-P

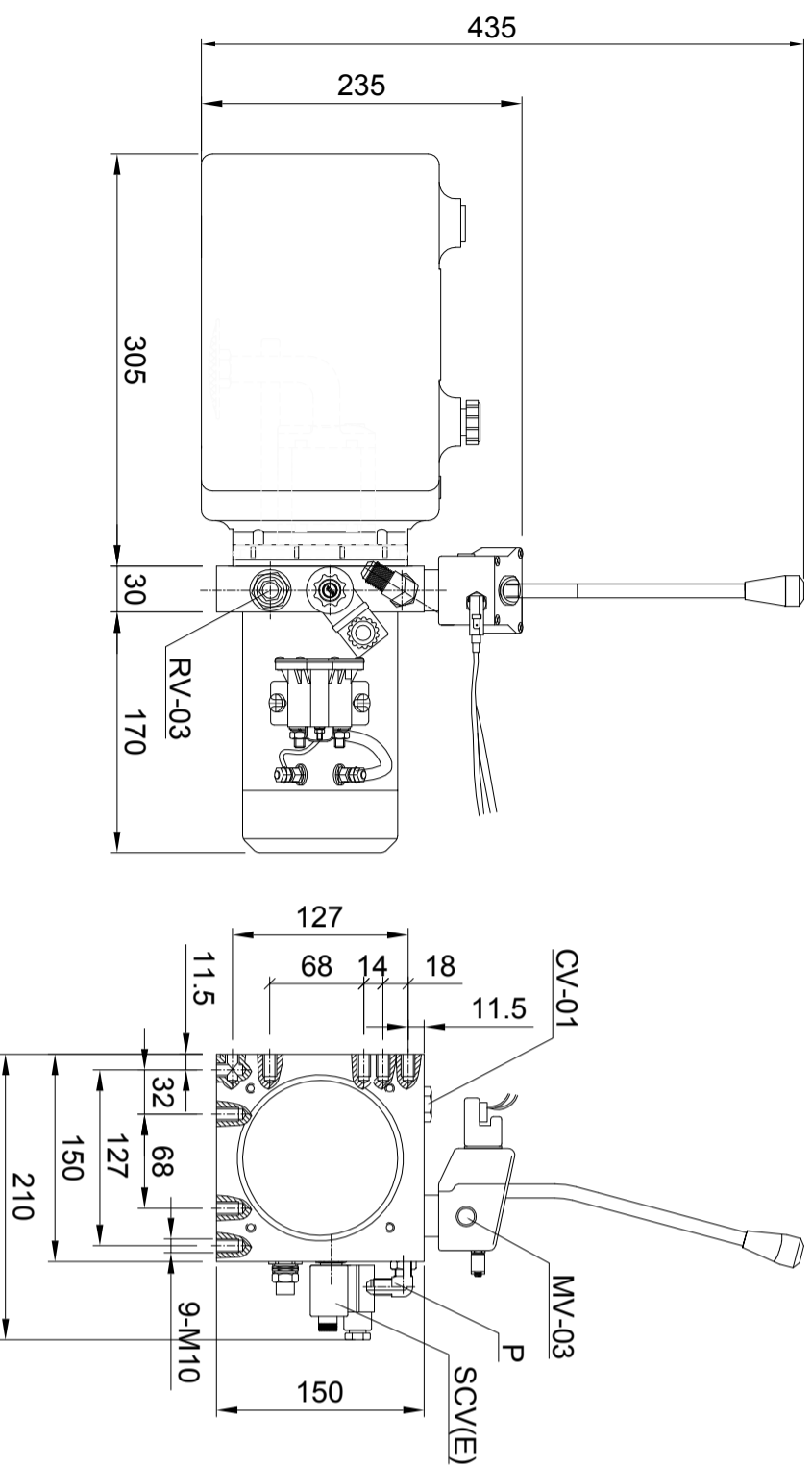
This power unit mainly provides lift function for stacker, integrated with self-developed 12V 1.6Kw high performance DC motor, integrated hydraulic valve block, manual unloading valve, pressure compensating throttle valve, check valve, relief valve, plastic tank, manual unloading valve with control switch for stacker and lowering controlled by the handle of unloading valve, equipped with pressure compensating throttle valve to make the unit fall smoothly.

### Technical Attributes

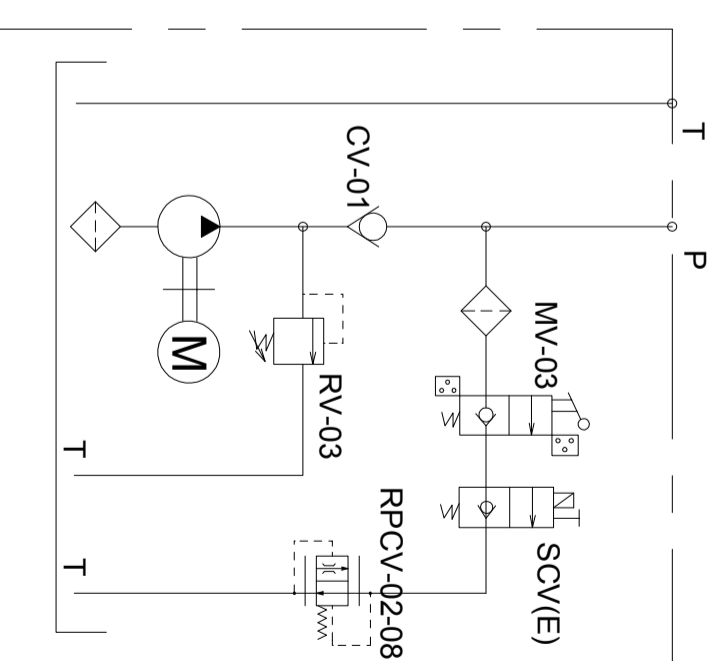
Model Code	VDP-U-MD12160-34-P
Motor Voltage	12V
Motor Power	1.6KW
Rated Speed	2600rpm
Pump Capacity	2.0mL/r
System Pressure	18MPa
Tank Capacity	7L
Oil Port	G3/8 "



### Outline Dimensions



### Hydraulic Schematic Diagram



### Characteristic curve

