

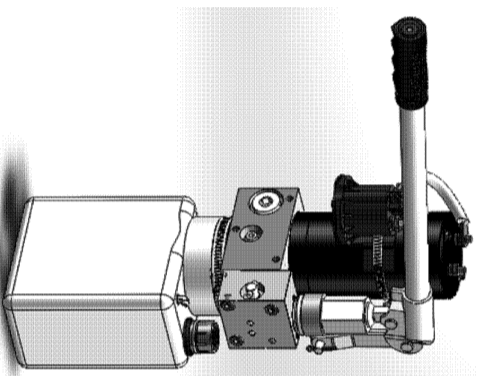


## VDP-U-MD12080AN-50-P

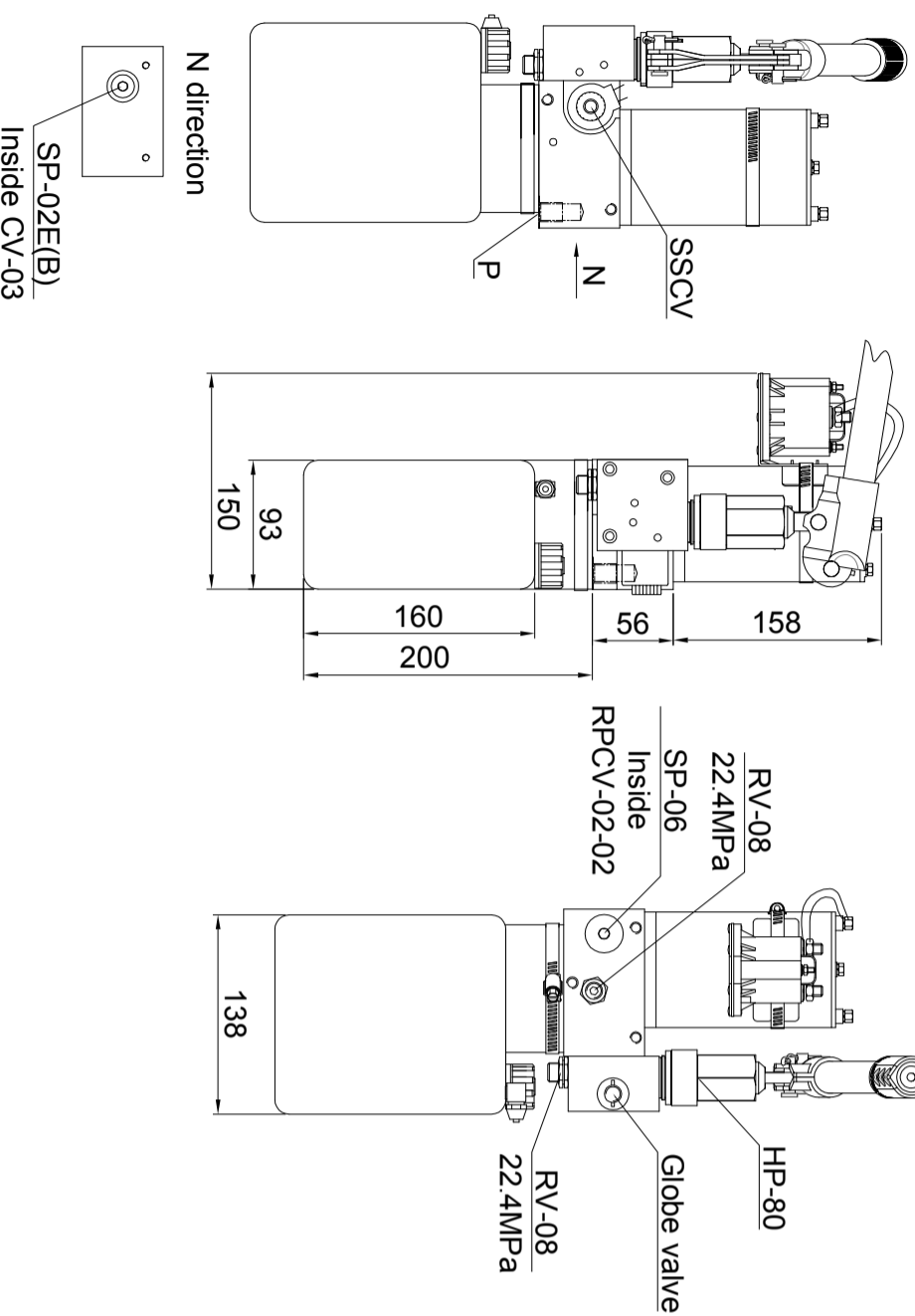
The hydraulic unit is mainly used in the wheelchair lift, using high-performance DC motor with plastic tank, and cartridge hydraulic valve, the overall structure is simple and compact, small size, light weight, through the single acting hydraulic principle realized by itself gravity drop, without starting motor for lowering, save energy, self-researched& designed the pressure compensation valve; in the case of no load, ensure the lowering steady, reliable operation. This product is equipped with manual hydraulic hand pump and lowering valve, in the case of the power supply no electricity, also can be manual lifting to ensure the safety and reliability of the wheelchair lift.

### Technical Attributes

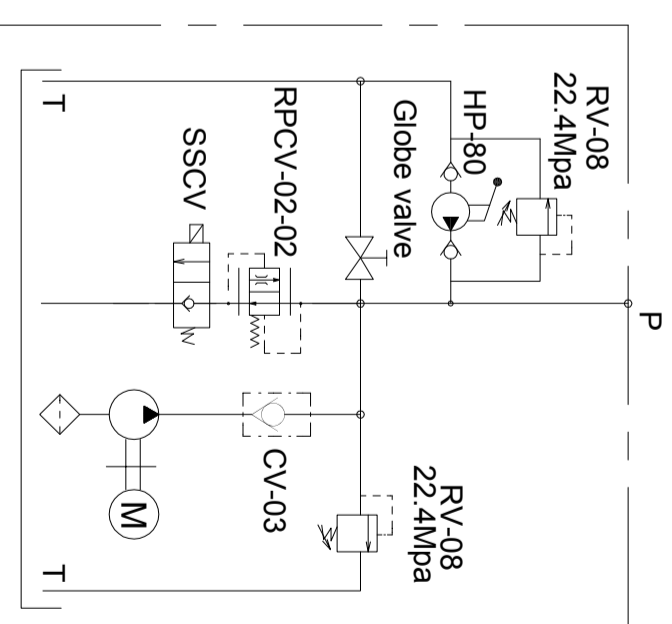
Model Code	VDP-U-MD12080AN-50-P
Motor Voltage	12V
Motor Power	0.8KW
Rated Speed	3800rpm
Pump Capacity	0.65mL/r
System Pressure	22.4MPa
Tank Capacity	1.5L
Oil Port	1/4-18NPTF



### Outline Dimensions



### Hydraulic Schematic Diagram



### Characteristic curve

